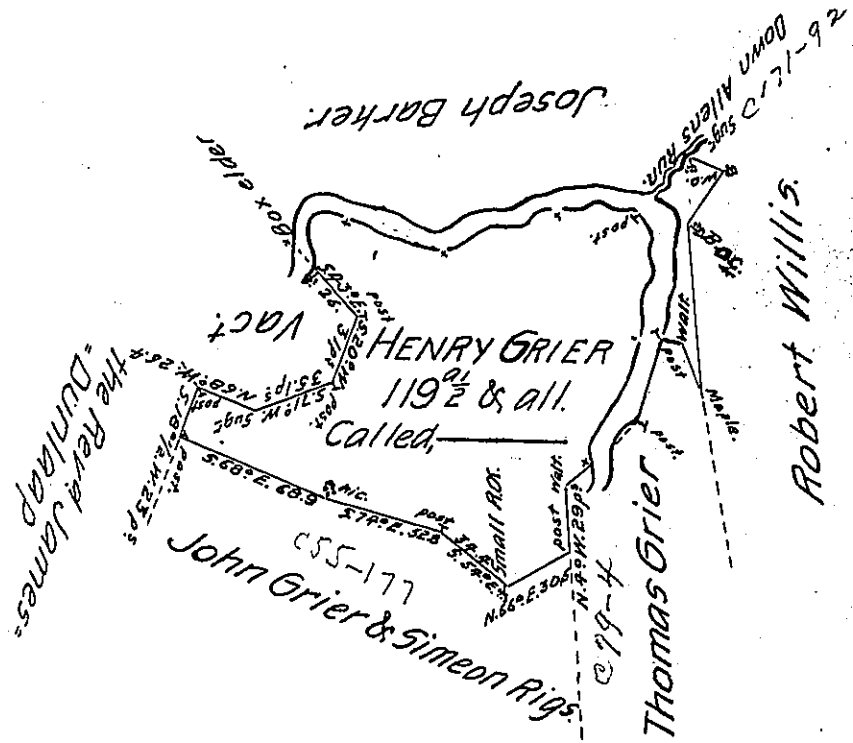


Courses & Distances from a Walnut, corner of Thomas Grier standing on the South side of Redstone Creek.

- N. 50° E. 37.3 p^s crossing said creek to a post on the bank, thence Down the creek & binding therewith.
- N. 20° E. 40 p^s to a post, thence quitting the creek.
- S. 77 1/4° E. 8.8 p^s to a Walnut.
- S. 23° E. 22.8 p^s to a Maple thence by land of Robert Willis.
- N. 6° W. 71.8 p^s to a B.O.C.
- N. 35° E. 28. p^s - - W.O.C.
- N. 72° W. 15.6 p^s to a Sugar tree on the bank of Allens run Thence Down said run & across the creek to a post
- S. 42° W. 31.2 - to a post, on the South side of the creek thence down the same & binding therewith.

West 37. p^s
 S. 80° W. 34.7 p^s
 S. 52 1/2° W. 20 p^s
 N. 70° W. 44 p^s
 S. 87 1/2° W. 17 p^s
 S. 12° E. 22.6 - to the Box Elder thence quitting the creek & running as Dr. Draught.



Situated chiefly on the south side of Big Redstone Creek, part in Manal lin, and part in Franklin Townships, in the County of Fayette & Surveyed the 23rd day of January 1788. In pursuance of a Warrant Dated the 10th September Day of 1787.

To Alex^r McClean Esq^r

John WELLS

DS

p^r Alexander McClean Dep.

To John Lukens Esquire, Surveyor General.

IN TESTIMONY that the above is a copy of the original remaining on file in the Department of Internal Affairs of Pennsylvania, made conformably to an Act of Assembly approved the 16th day of February, 1833, I have hereunto set my Hand and caused the Seal of said Department to be affixed at Harrisburg, this third day of February 1905.

Loac R. Brown
 Secretary of Internal Affairs.